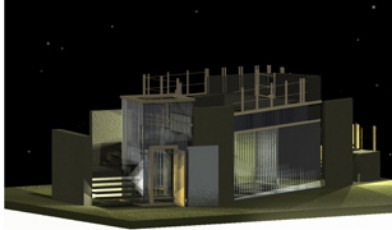


WALL DETAIL 1"=1'-0"



SECTION- LOOKING NORTH



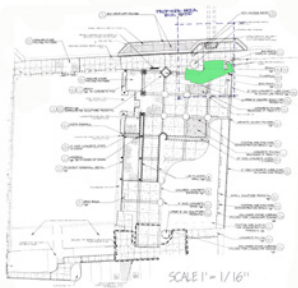
NIGHT PERSPECTIVE

1/2"=1'-0"



TRANSITION

THE ONE-WAY BUILDING



A BUS STOP IS TRANSITION.
 IT IS ENTERED ONLY ONCE
 AND EXITED. IT IS A PLACE
 BETWEEN DESTINATIONS.
 A REFINED WAITING ROOM.



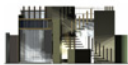
NORTH ELEVATION
SCALE = 1/4"=1'-0"



EAST ELEVATION



SOUTH ELEVATION



WEST ELEVATION

SITE PLAN



FLOOR PLAN



TRANSITION